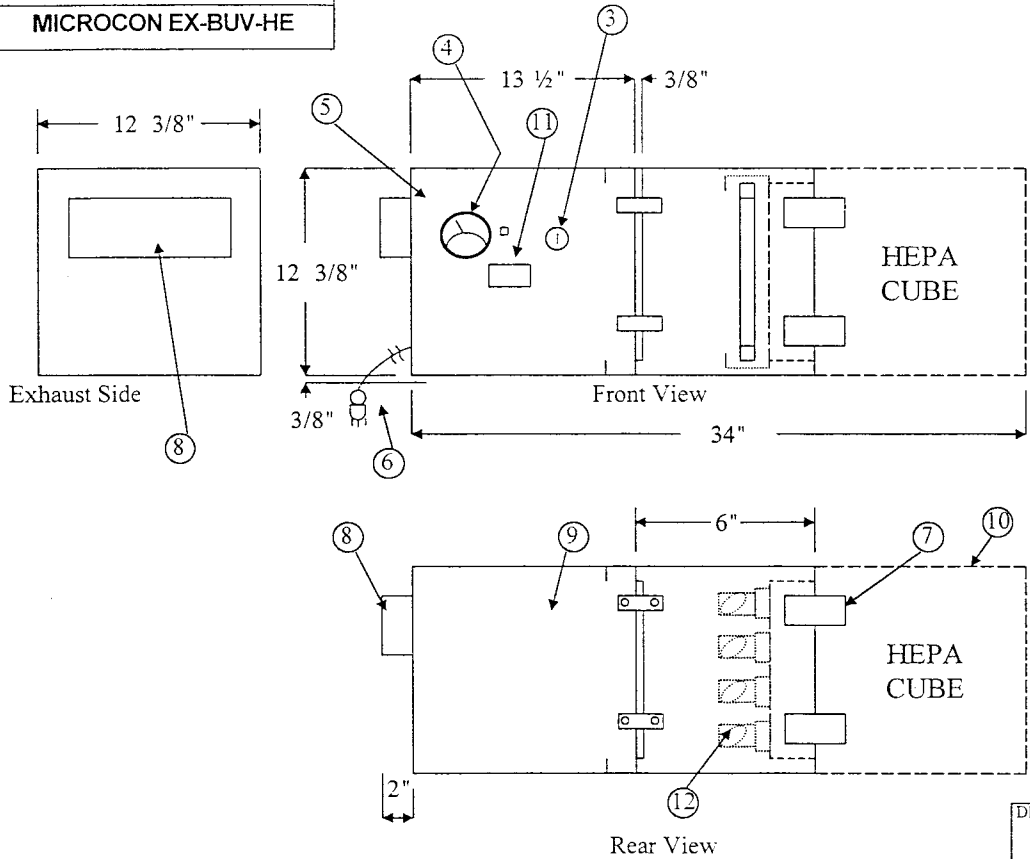
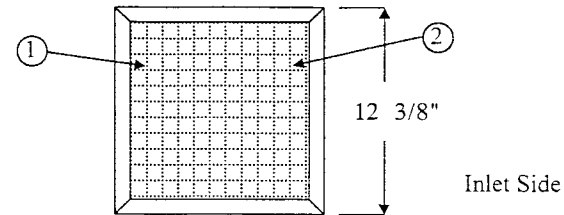


BIOLOGICAL
Controls
SUBMITTAL DRAWING
MICROCON EX-BUV-HE



- (1) INLET GRILLE
- (2) 1 EA. 1" TWO-PLY POLYESTER SYNTHETIC 35% EFFICIENT PRE-FILTER PANEL
- (3) HIGH / OFF / LOW - KEY SWITCH
- (4) 1 EA. MINIHELIC STATIC PRESSURE GAUGE
- (5) 1 - BLOWER. PSC FORWARD CURVED, 1/5 HP, 115V - 50/60 Hz, TWO SPEED, 3.2A (HIGH) 2.07A (LOW) THERMAL RESET PROTECTED, AIRFLOW 495 HIGH, 435 LOW
- (6) 1 EA. SIX (6) FOOT CORD, 18/3 CORD WITH 115V HOSPITAL GRADE PLUG
- (7) 4 EA. HEPA FILTER CUBE DRAW LATCHES
- (8) EXHAUST DUCT (6 X 9.875")
- (9) UNIT CONSTRUCTED OF 20 GA. STAINLESS TYPE 304, #4 FINISH
- (10) 1 EA. 12 X 12 X 11.5" HIGH CAPACITY HEPA FILTER RATED 99.99% ON 0.3 MICRON SIZE PARTICLES
- (11) ELECTRONIC RESETTABLE HOUR METER
- (12) 4 EA., 8 WATT UV (germicidal 253.4 nm) LAMPS

Notes: ELECTRICAL REQUIREMENTS: 115V, 1 ph, 60 Hz., 1.0 FLA, 5 AMP FUSE, ELECTRICAL WIRING IS IN ACCORDANCE WITH THE LATEST NEC STANDARDS



DRAWN FOR		BIOLOGICAL 749 Hope Road <i>Controls</i> Suite A Eatontown, NJ 07724			
STANDARD					TITLE MICROCON EX-BUV-HE (Horizontal Exhaust)
DRAWN BY	LVB	SIZE	JOB NO.	DWG NO.	REV
APPROVED BY		SCALE	1 1/2" = 1'- 0"	DATE	July 13, 2002
				SHEET	